

Household Latex Standard Heavy Weight

Natural Rubber Latex Household Glove

Material

- Natural Rubber Latex

Inner surface

- Flocked

Cuff

- Straight, Zig Zag or Beaded

Benefits

- Maximum protection due to heavy weight
- High flexibility due to Natural Rubber Latex
- Excellent comfort
- Resistant to diluted acids, alkafies and detergents

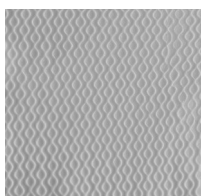
Applications

- Household, Food Processing, Cleaning & Janitorial



Mould Design

Gotta Mould



Fish Scale



Standard Colors:

Other colours available MOQ



Available Sizes	Length (mm)	Width at Palm	Weight Pair (g)	Thickness (mm)
Small	330 ±10	95 ± 5	60 ±2	0.45 ±2
Medium	330 ±10	100 ± 5	65 ±2	0.45 ±2
Large	330 ±10	115 ± 5	70 ±2	0.45 ±2
Extra Large	330 ±10	120 ± 5	74 ±2	0.45 ±2

Physical Properties

Tensile Strength

Before ageing

Min. 17.0 MPa

After ageing

Min. 15.0 MPa

Elongation at break

Min. 650%

Min. 550%

Compliant with

- Personal Protective Equipment Directive 89/686/EEC & minimal Risk Category
- German Foodstuffs & Consumer Goods act
- Canadian Food Inspection

General Info & Certificates

- MOQ required
- Availability of glove in different length, weight, grip, mould & color tbd
- For further information concerning the applicable certifications, please contact SafeMed under info@safemed.ch